

Nikta Zarif Yussefian¹, Mathieu Letendre-Jauniaux¹, Dina Sikpa², Réjean Lebel², Marie-Eve Ducharme³, Olivier Daigle³ and Yves Bérubé-Lauzière^{1,2}

¹Laboratoire TomOptUS, Département de génie électrique et de génie informatique Université de Sherbrooke, 2500 boul. de l'Université, Sherbrooke, Québec, J1K 2R1, Canada.

²Centre d'imagerie moléculaire de Sherbrooke, 3100 12e av. Nord, Sherbrooke, QC, J1H 5N4, Canada

³NüVü Cameras, 5155 avenue Decelles, Pavillon J.A. Bombardier, Montréal, QC, H3T 2B1, Canada

Introduction

The QOS-Quidd optical small animal molecular imaging scanner allows acquiring planar bioluminescence and fluorescence images. To endow the QOS with 3D tomographic imaging capabilities and enhance its functionality and sensitivity, an ultra-high sensitivity ultra-low noise electron multiplying CCD (EMCCD) NüVü camera and a custom built rotating quad laser illumination module are integrated to it.

QOS System

The QOS consists of 6 major components that are controlled via an integrated, but complex and sophisticated software, the QOSoft written in C++ and C# programming languages.

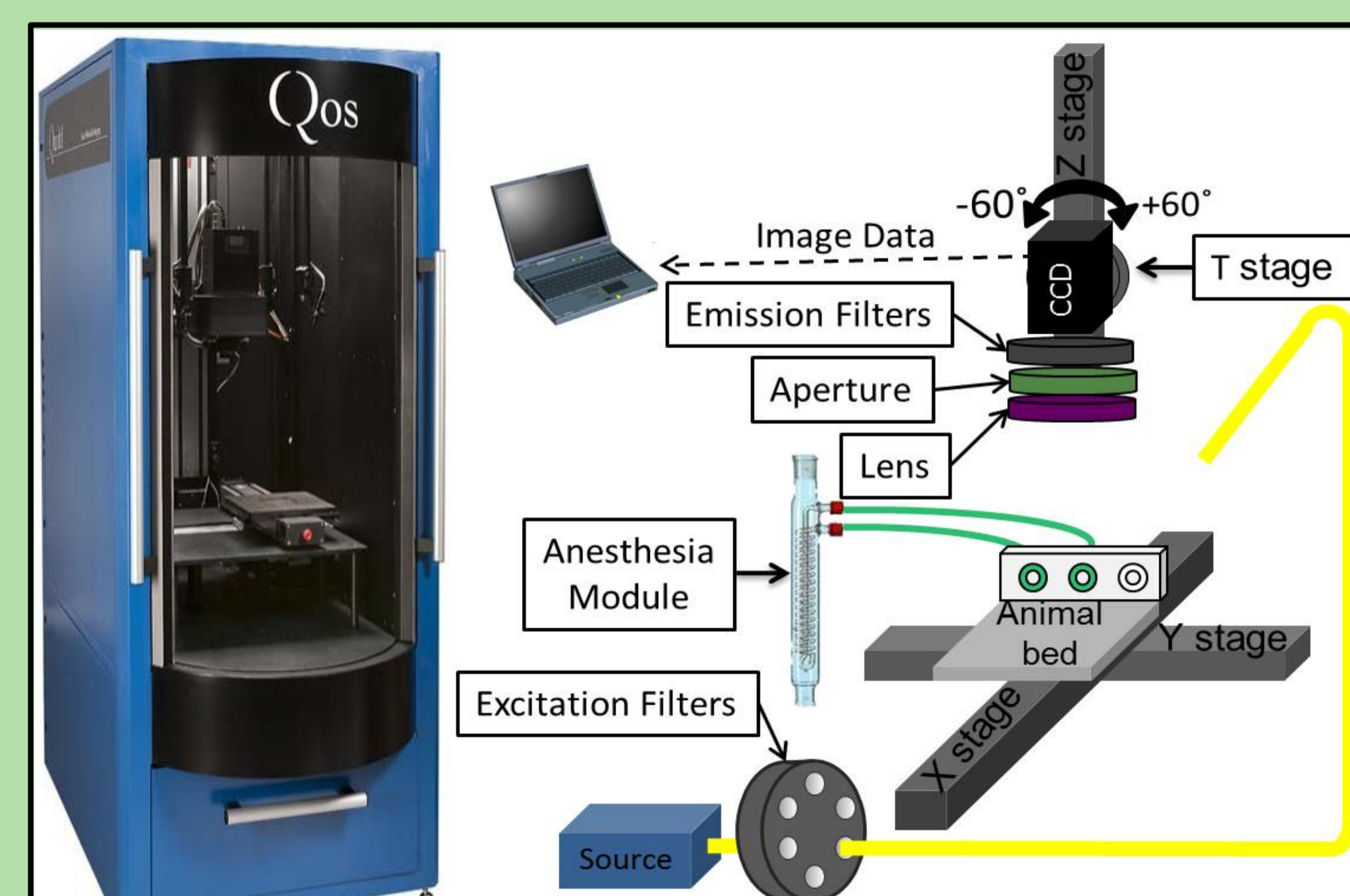


Figure 1. QOS configuration

Limitations

- Acquisition only in epi-illumination mode
- Planar imaging only
- Lack of sensitivity
- Limited rotation angle ($\pm 60^\circ$ from vertical)
- Non homogenous illumination module

QOS Modifications

1. Integration of EMCCD Camera

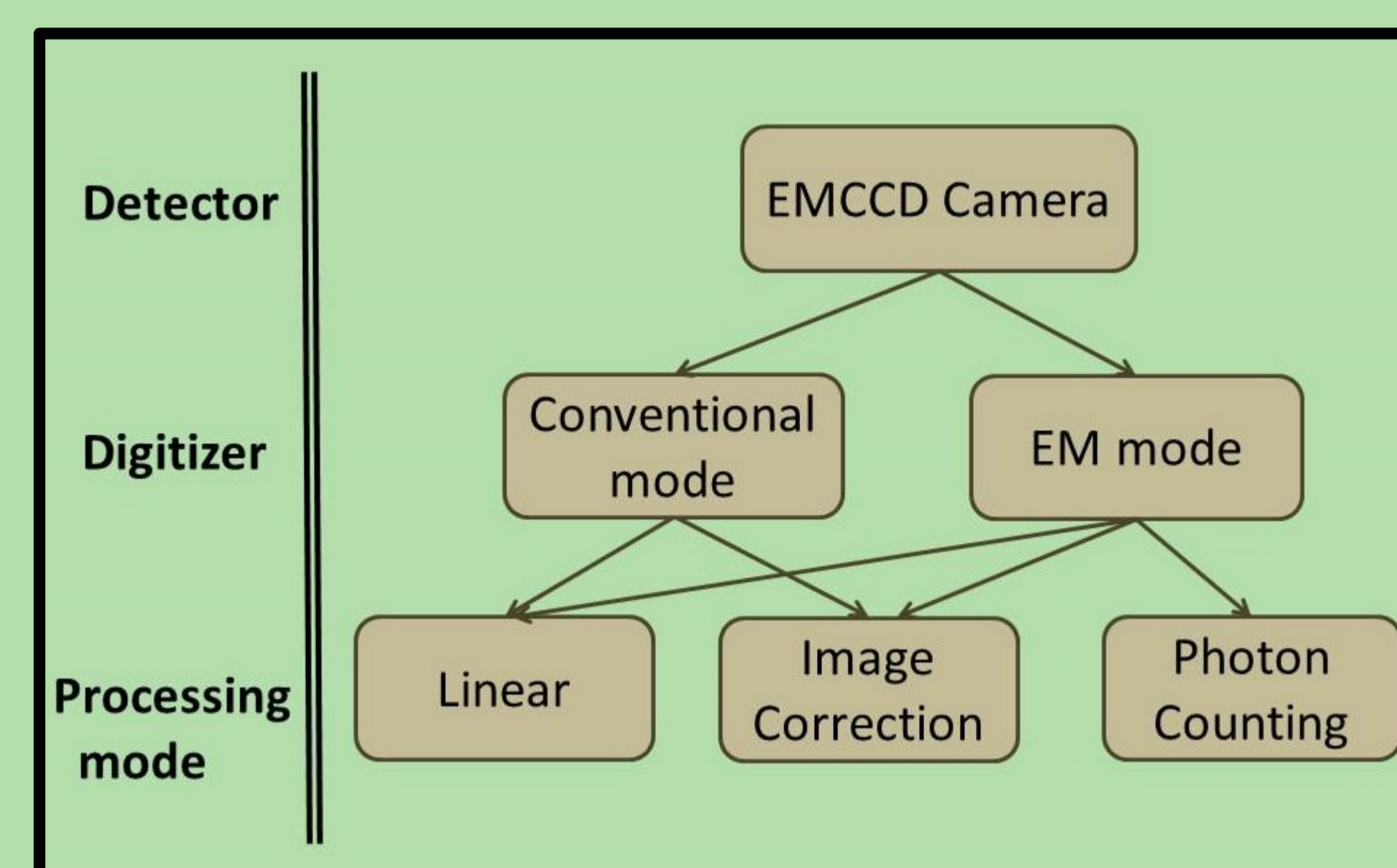


Fig 2. EMCCD processing modes

2. Integration of quad laser module

- 4 wavelengths
- Rotary arm
- Tilting head
- Portable
- Animal bed

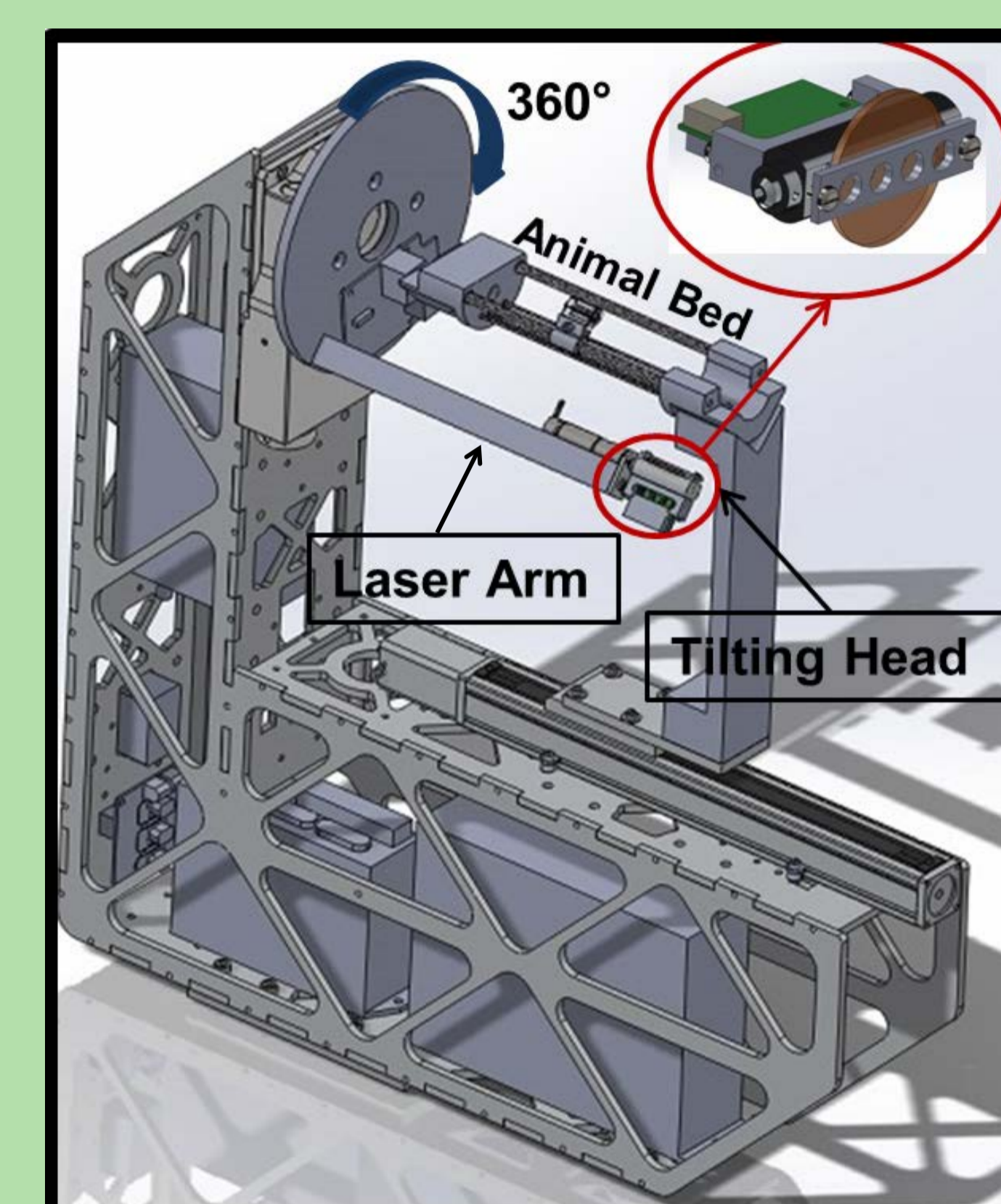


Fig 3. Quad laser module.

3. Rotation angle of camera has been extended to cover from -90° to $+90^\circ$

Results

- The 4T1-Luc cells were harvested and added to the 96 wells plate (image taken after the addition of luciferine). With the NüVü EMCCD camera, we were able to detect down to 100 cells compared to ~ 1000 cells with the old camera (Andor).

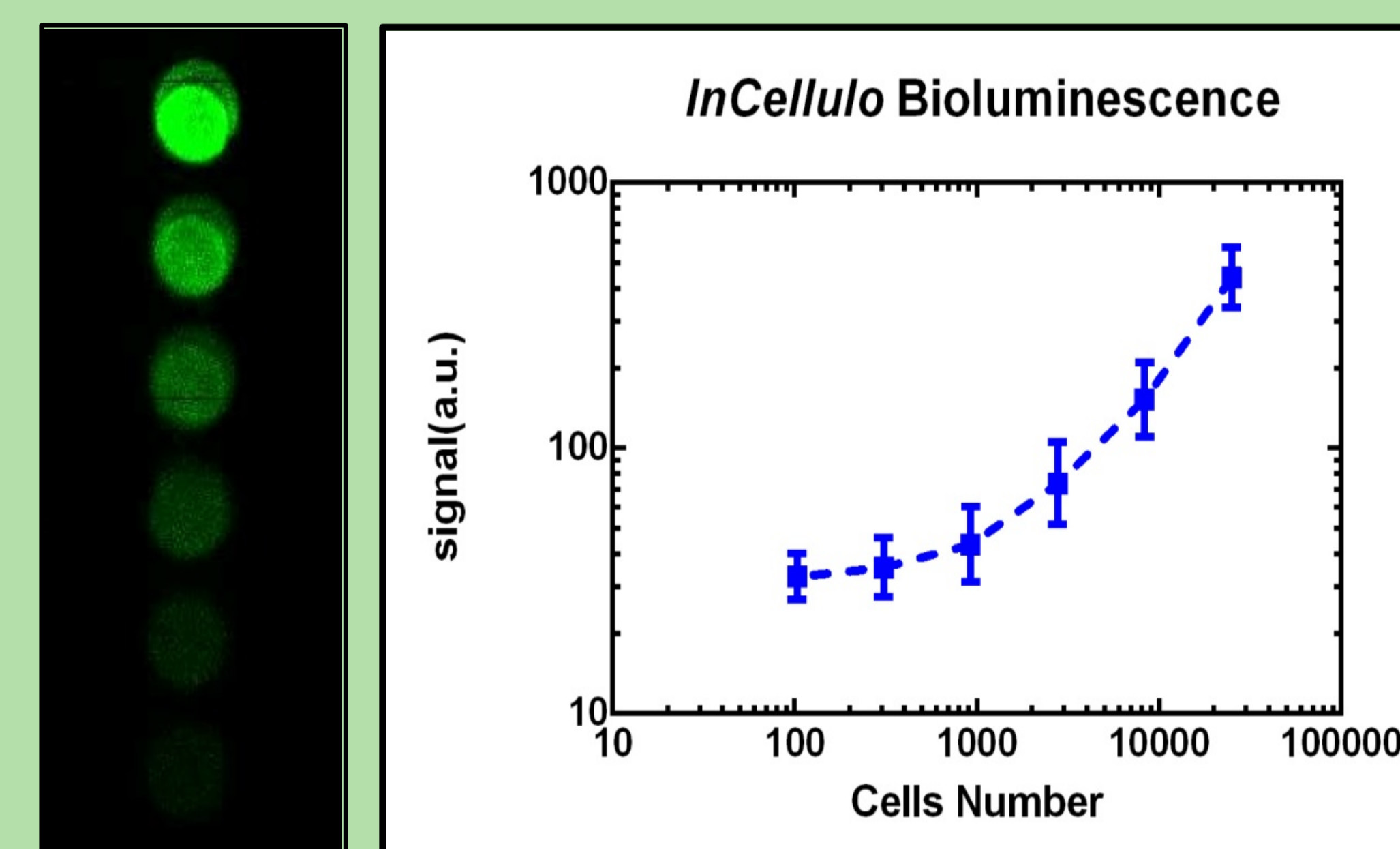


Fig 4. InCellulo bioluminescence experiment.

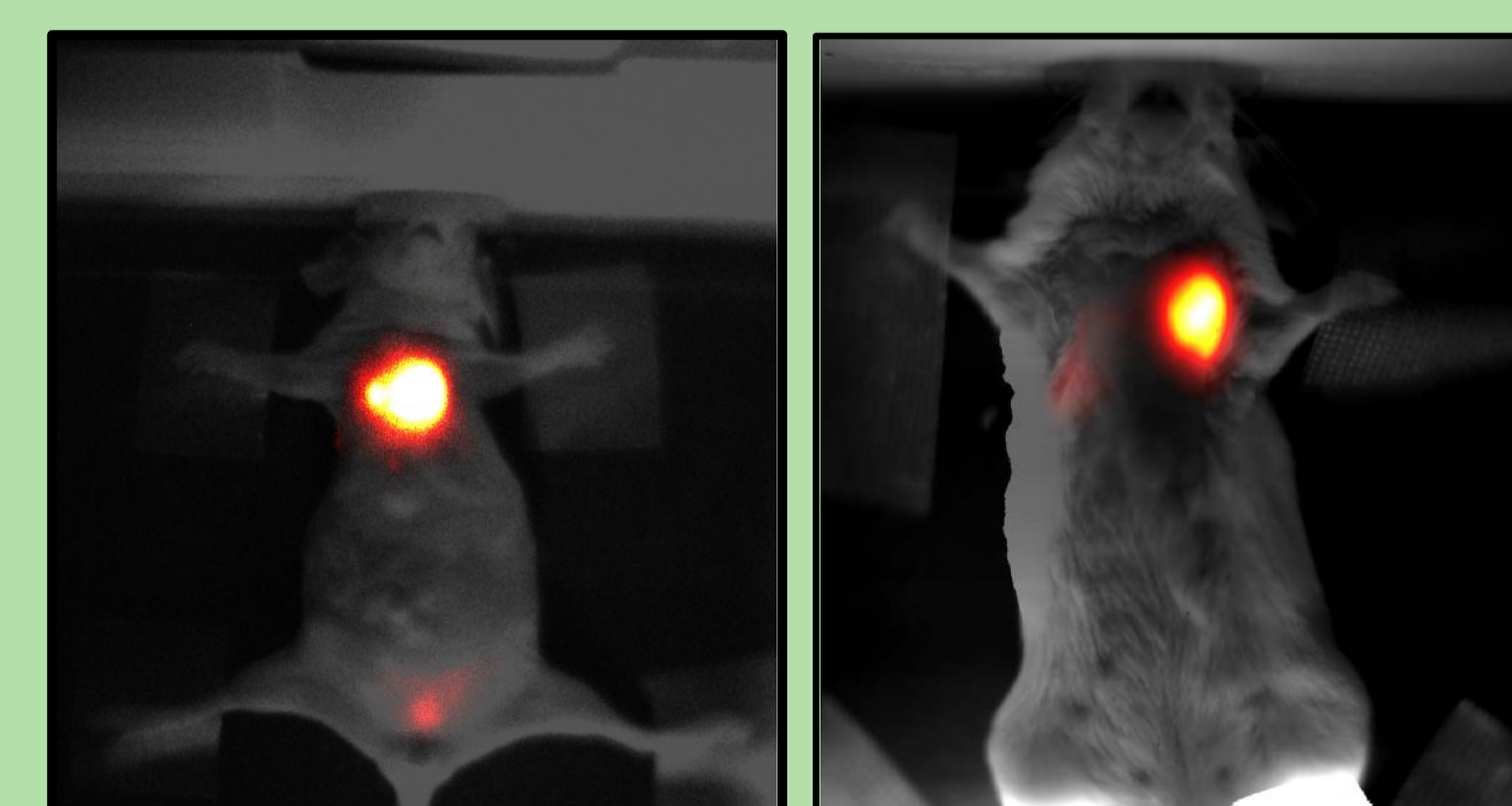


Fig 5. EMCCD Experiment

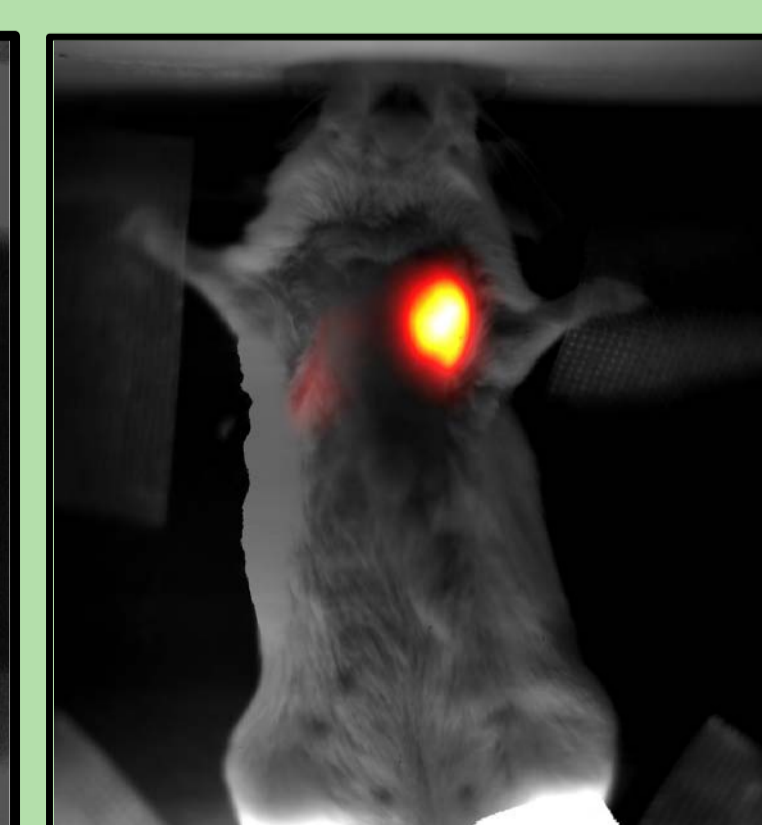


Fig 6. CCD Experiment

- 100 000 of 4T1-Luc cells were injected through the heart of two mice. This was followed by the injection of 200 μ l of 40 mg/ml luciferine to activate the bioluminescence. The images were acquired 18 days after the injection.

An SNR evaluation performed on a ROI was drawn manually over the heart. To obtain the same SNR as with the CCD camera (300 s acquisition time for 1 image), three EMCCD images each acquired in 2.5 s needed to be averaged (overall acquisition time of 7.5 s) \rightarrow acquisition time reduced by a factor of 40!

Conclusion

By using the EMCCD camera, the acquisition time for having the same SNR as with the CCD is reduced significantly, while it is possible to obtain a higher SNR by taking several images with such a short exposure time. This attests a remarkable improvement on sensitivity.

Future Work

Exploiting the QOS to acquire fluorescent images all around the subject (animal or phantom) to obtain 3D tomographic images using the laser module.

References

1. R. Lebel, N. Zarif Yussefian, M. Letendre-Jauniaux, O. Daigle, E. Ranyuk, J. Van Lier, B. Guérin, R. Lecomte, M. Massonneau, M. Ducharme, and Y. Bérubé-Lauzière, "Ultra-high sensitivity detection of bimodal probes at ultra-low noise for combined fluorescence and positron emission tomography imaging," in *Proc. SPIE 8574, Multimodal Biomedical Imaging VIII, SPIE BiOS - Photonics West, San Francisco, CA, U.S.A., 85740M 1-7* (2013).
2. R. Weissleder, "Scaling down imaging: molecular mapping of cancer in mice," *Nat. Rev. Neurosci.* 2, 11-18 (2002).
3. A. H. Hielscher, "Optical tomographic imaging of small animals," *Curr. Opin. Biotechnol.* 16, 79-88 (2005).
4. G. Bouchard, G. Bouvette, H. Therriault, R. Bujold, C. Saucier and B. Paquette, "Pre-irradiation of mouse mammary gland stimulates cancer cell migration and development of lung metastases," *Br. J. Cancer* 109, 1829-1838 (2013).
5. E. Ranyuk, R. Lebel, Y. Bérubé-Lauzière, K. Klarskov, R. Lecomte, J. E. van Lier and B. Guérin, "68Ga/DOXA and 64Cu/NOTA-Phthalocyanine Conjugates as Fluorescent/PET Biomodal Imaging Probes," *Bioconjug. Chem.* 24(9), 1624-1633 (2013).
7. M. Ducharme, O. Daigle, *On-line Tutorial on EMCCD*, (NüVüCameras, 2013), <http://www.nuvucameras.com/emccd-tutorial>.

Acknowledgements